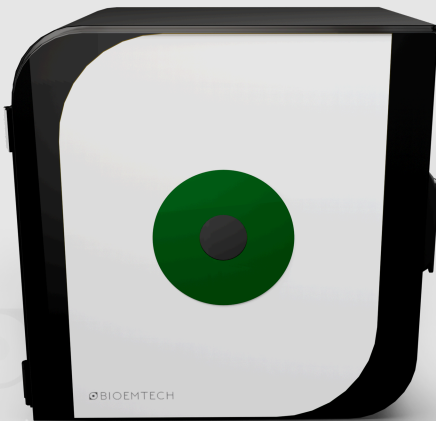


 BIOEMTECH

A preclinical multi-mouse imaging platform
for fast *in vivo* screening of fluorescence and
bioluminescence probes

 eye™



System Features

High-throughput
multi-mouse imaging



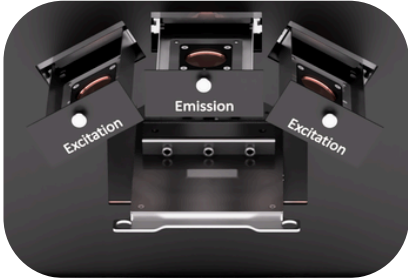
General info

Modality	FLI / BLI
Number of mice	Up to five (5)
Visible range	400 - 900 nm
Detector	sCMOS / qCMOS
Active FOV	235 x 130mm



User-exchangeable
optical filters

System Features



Filter info

Filter set	Excitation Passband (nm)	Emission Passband (nm)	Dyes
Green	455-490	512-568	GFP, EGFP, FITC, YFP
Orange	530-557	590-650	DsRed, Td-Tomato, mCherry, Cy3
Red I	608-638	658-694	Cy5, Alexa fluor 633
Red II	648-674	694-770	Cy5, Alexa fluor 660, Alexa fluor 680
NIR I	663-738	765-855	Cy7, ICG

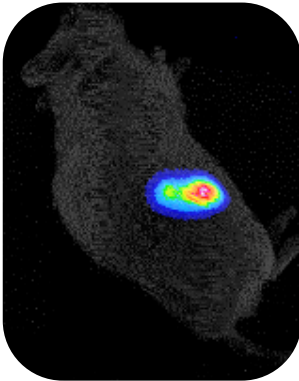
Applications

In vivo imaging of **bioluminescence** probes

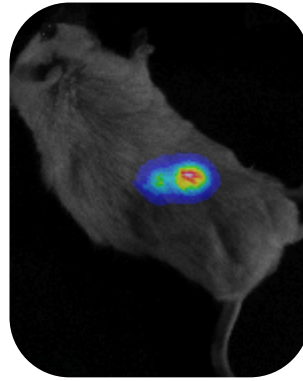


Oncology.

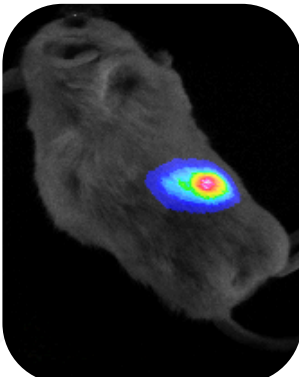
Day 28



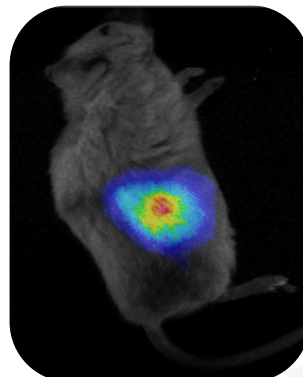
Day 38



Day 47



Day 62



Monitoring growth of a subcutaneous U87MG-Luc2 tumor using D-luciferin
Image info: 15 min post-injection – 30 sec exposure

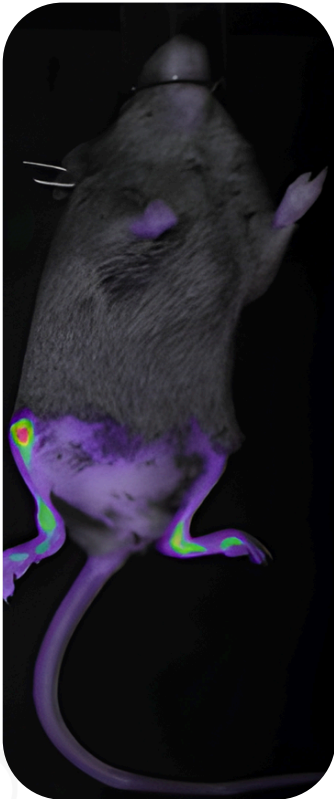
In vivo imaging of
fluorescence probes

Applications



Spondyloarthritis

prone



supine



Bone imaging in a spondyloarthritis model using OsteoSense 680

Image info: 23 h post-injection – 100 ms exposure

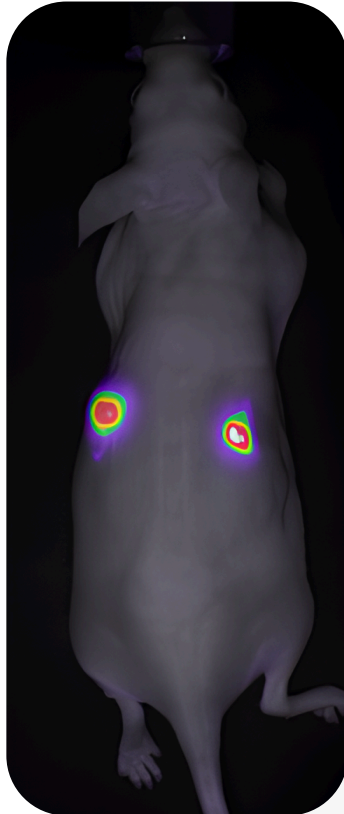
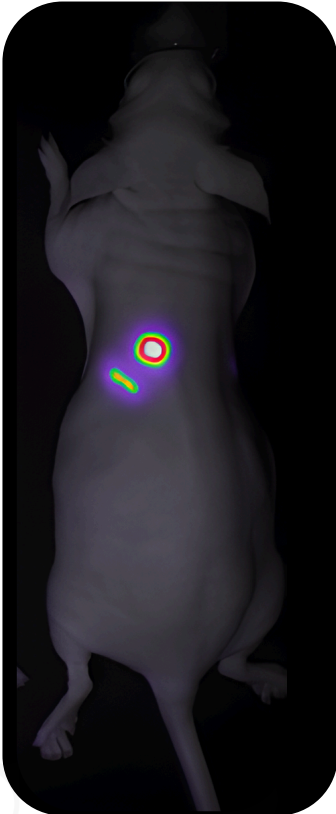
Ex ~ 680nm – Em ~ 690nm

Applications

In vivo imaging of
fluorescence probes



Neurofibromatosis



Tumor imaging in a neurofibromatosis model using tdTomato

Image info: 1 week post-injection – 100ms exposure

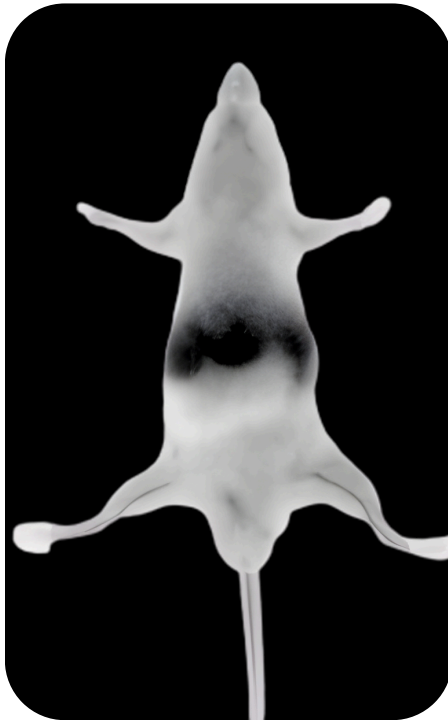
Ex ~ 560 nm – Em ~ 580 nm

In vivo imaging in the
SWIR window

Applications



Vascular imaging



SWIR imaging of the saphenous vein in a healthy mouse using ICG

Image info: 1 min post-injection – 5 ms exposure
Ex ~ 780 nm – Em > 1250 nm



BIOEMTECH's eyes™ systems are designed to make molecular imaging more accessible, practical and efficient

SCAN ME

